



DEFENSE LOGISTICS AGENCY

DoD EMALL

Home

Sh

tion

Related Sites

Search by Keyword  
or select a category



XXI

EMALL Shopping

Reutilization

e.g., Reuse, Recycling and Disposal

Clothing

e.g., Uniforms, Footwear, Tents, Yarn

Medical

e.g., Drugs, Dental, X-Ray Equipment

Subsistence

e.g., Ration Heater, Religious Meal

Information Technology

e.g., Computers, Communication, Teletype

Aviation & Space

e.g., Amplifiers, Flight Instruments, Test Equipment

Maritime

e.g., Deck Machinery, Misc. Ship & Marine Equipment

Energy Products & Services

e.g., Coals, Natural Gas, Bulk Fuels

Raw/Fabricated Materials

e.g., Bars, Rods, Paper, Plastics

Document Services

e.g., Document Finishing, Copying, Mailing

DoD EMALL News

# DOD ELECTRONIC COMMERCE MALL (DoD EMALL)





# DoD EMALL BRIEFING

## OVERVIEW

- ◆ **EMALL- What Is It?**
- ◆ **The Commodities Corridor**
  - ◆ Features
  - ◆ Architecture
  - ◆ Requisition/Order Structure
- ◆ **EC/EDI Issues**
- ◆ **Points Of Contact**





# DoD EMALL - What Is It?

- ◆ Internet Requisitioning/Ordering System
- ◆ 4 Corridors - Service/Agency Led
  - ◆ Commodities Corridor (DLA) -  
On Line
  - ◆ Information Technology Corridor (Navy) -  
Under Development
  - ◆ Services Corridor (Air Force) -  
Under Development (with Army)
  - ◆ Construction Corridor (Army)-  
Under Development (with Air Force)





DEFENSE LOGISTICS AGENCY



# DoD EMALL Commodities Corridor

- ◆ **Based On DLA EMALL**
- ◆ **Multiple Sources of Supply - Single “Shopping” Cart**
  - ◆ DLA Depot/Direct Vendor Stocks
  - ◆ ASCOT Items
  - ◆ Commercial Catalogs
  - ◆ Defense Reutilization Stocks
  - ◆ Service Catalog Items; e.g. TACOM-Tires
- ◆ **Credit Card or Fund Cite Payment Method**
- ◆ **NSN & Part Numbered Items**





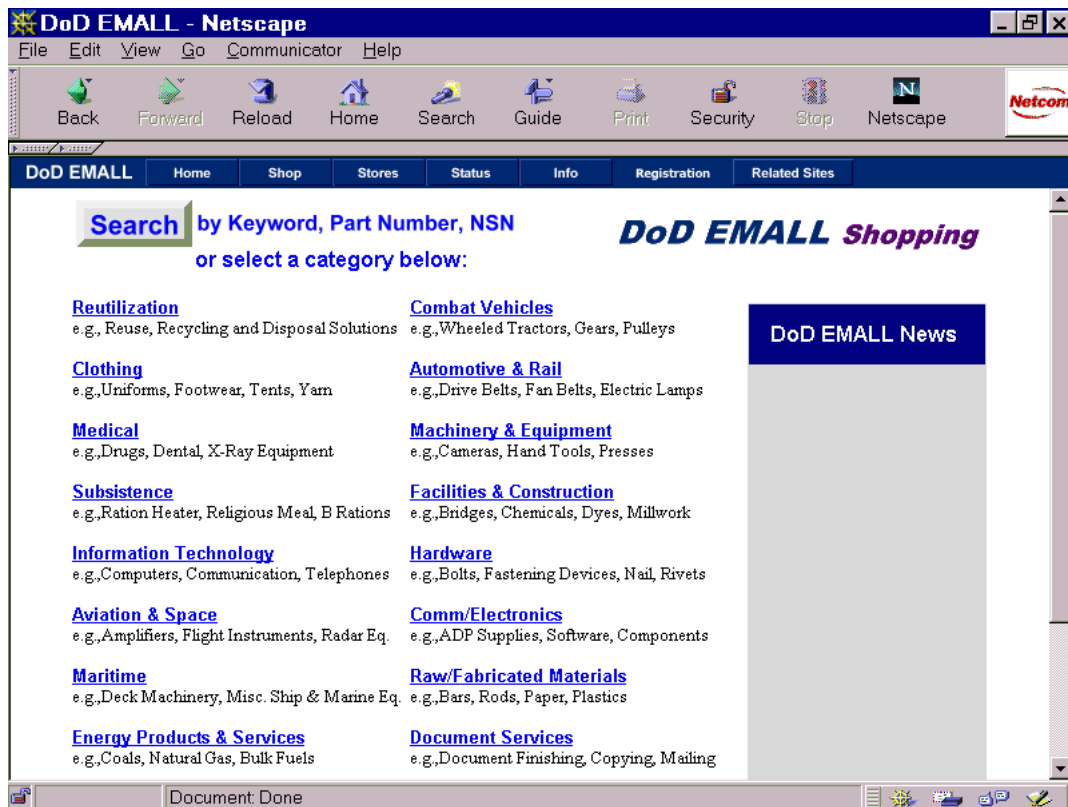
# Commodities Corridor FEATURES

## email.dla.mil

Simple  
Registration

Secure  
On-Line  
Ordering

Search By  
NSN, P/N,  
Description



On-Line  
Order  
Status

Stock  
Inventory  
Visibility

Credit  
Card or  
MILSBILLS



# Commodities Corridor UPCOMING SOURCES OF SUPPLY

## And Products

### COMMERCIAL VENDORS

- ◆ 3M
- ◆ Ansley Business Materials
- ◆ B&B Hose & Rubber
- ◆ Downey, Inc.
- ◆ Newark Electronics
- ◆ Rayco Supply, Inc.
- ◆ Stanley Works
- ◆ W. W. Grainger, Inc

- Painting Supplies
- Rubber Hoses
- Plumbing

◆ 300,000 Items

- Truck -Auto Parts
- Electronic Parts
- Tools

### ASCOT ITEMS

- All Military Clothing & Textile Items

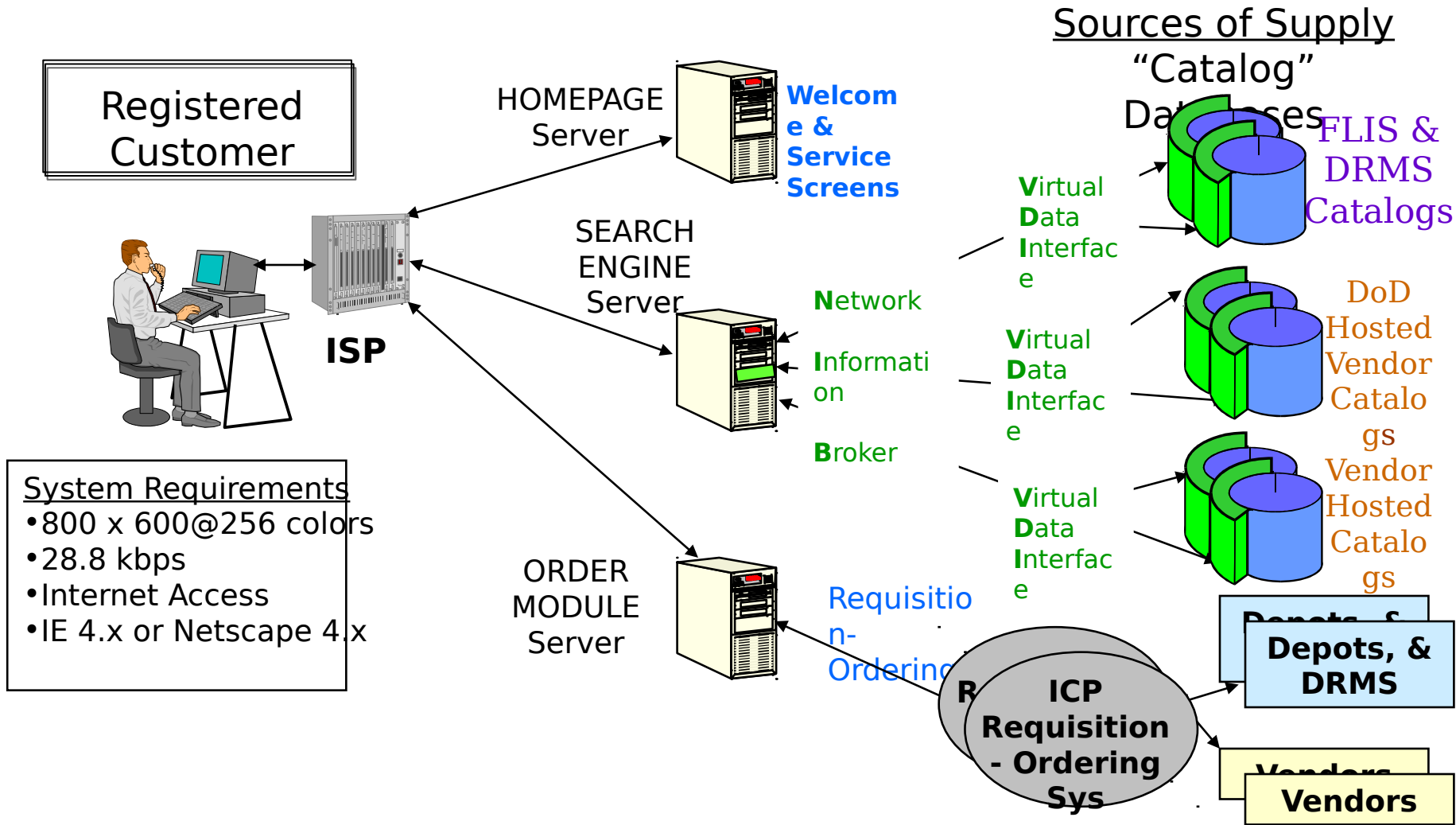


### TACOM

- Tires



# Commodities Corridor SEARCH/ORDER ARCHITECTURE

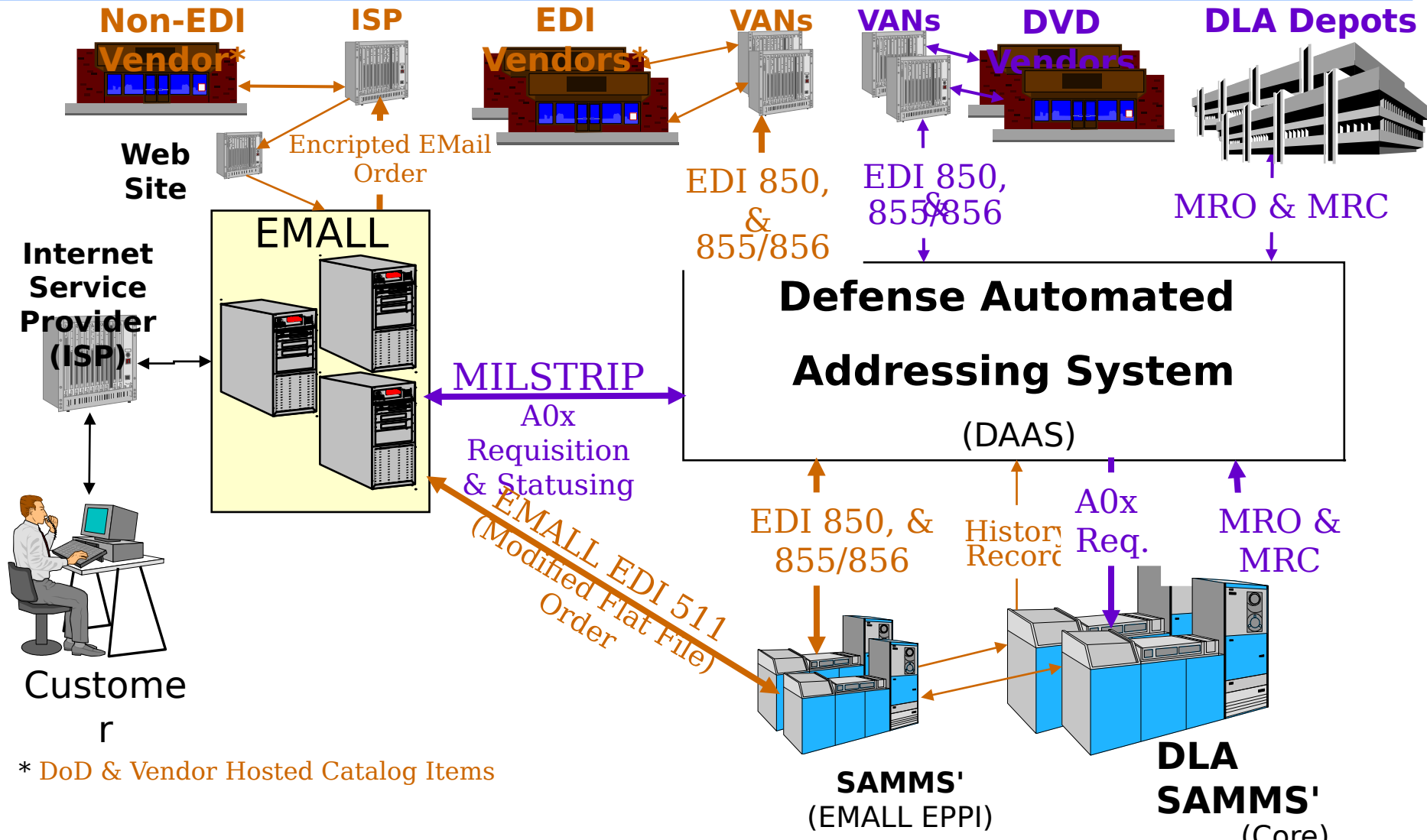


### System Requirements

- 800 x 600@256 colors
- 28.8 kbps
- Internet Access
- IE 4.x or Netscape 4.x



# Commodities Corridor CURRENT REQUISITION-ORDER STRUCTURE

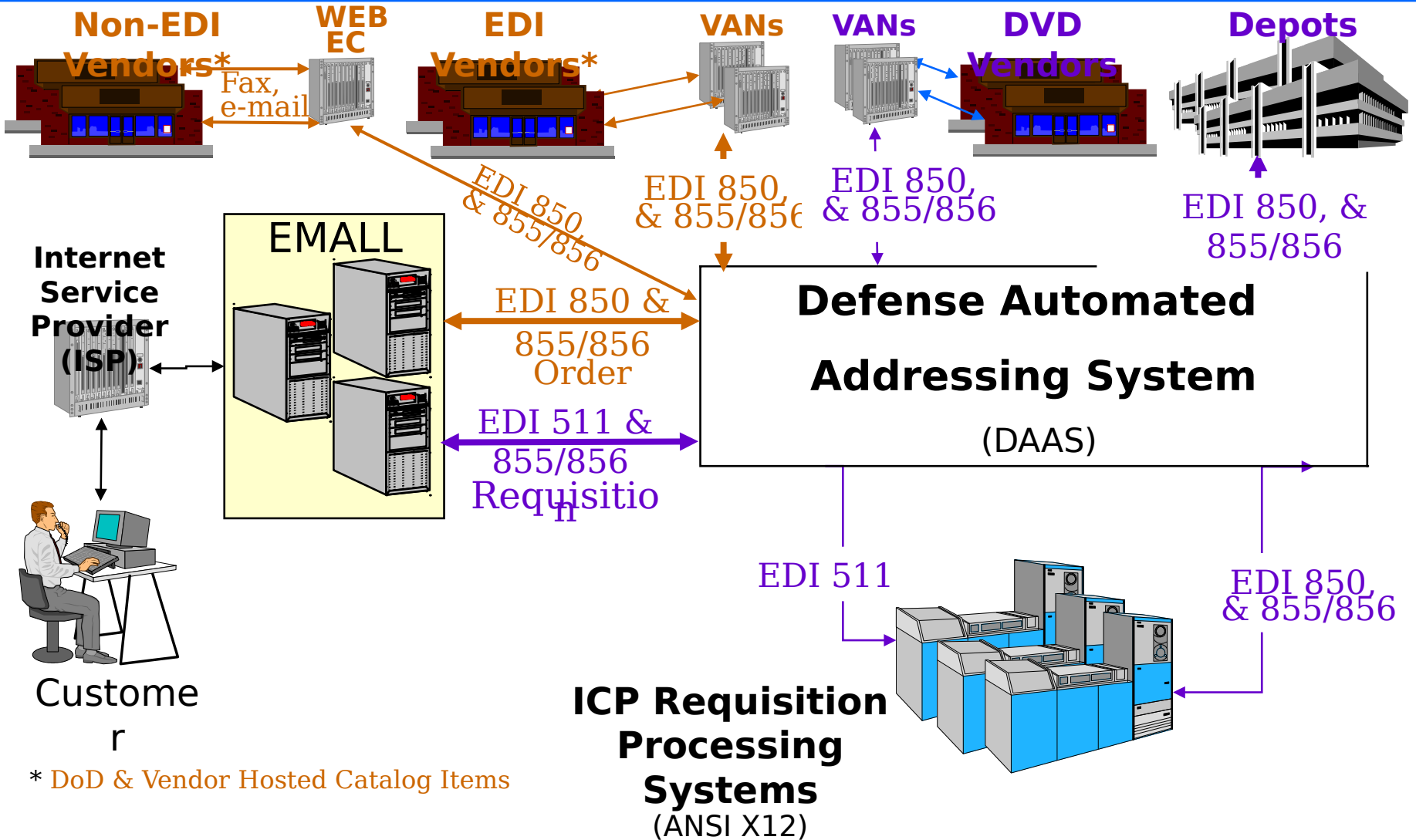


\* DoD & Vendor Hosted Catalog Items





# Commodities Corridor POSSIBLE ANSI X12 STRUCTURE



\* DoD & Vendor Hosted Catalog Items



DEFENSE LOGISTICS AGENCY



# Commodities Corridor EMALL-RELATED EC/EDI ISSUES

- ◆ Supply Process Policy/Procedures; e.g.
  - ◆ Receipting/"Closed Loop" Requirements
    - Do items ordered from Commercial Catalog Vendors via EMALL require receipt by orderer?
    - Are such sales "issues from DoD wholesale stocks?"
  - ◆ Capture of Logistics Response Time Data
    - Is LMARS data required to be captured by the system for EMALL orders?
    - Would the capture of LMARS data be cost effective given its volume relative to standard requisitions/orders?



# EMAIL POC's



## JECPO

**John Christensen,**

DoD EMALL Program Manager,  
john\_christensen@hq.dla.mil  
703. 767-0612

**Gabrielle Zimmerman**

Commodities Corridor Pgm Mgr  
gzimmerman@dscr.dla.mil  
804.279-3646